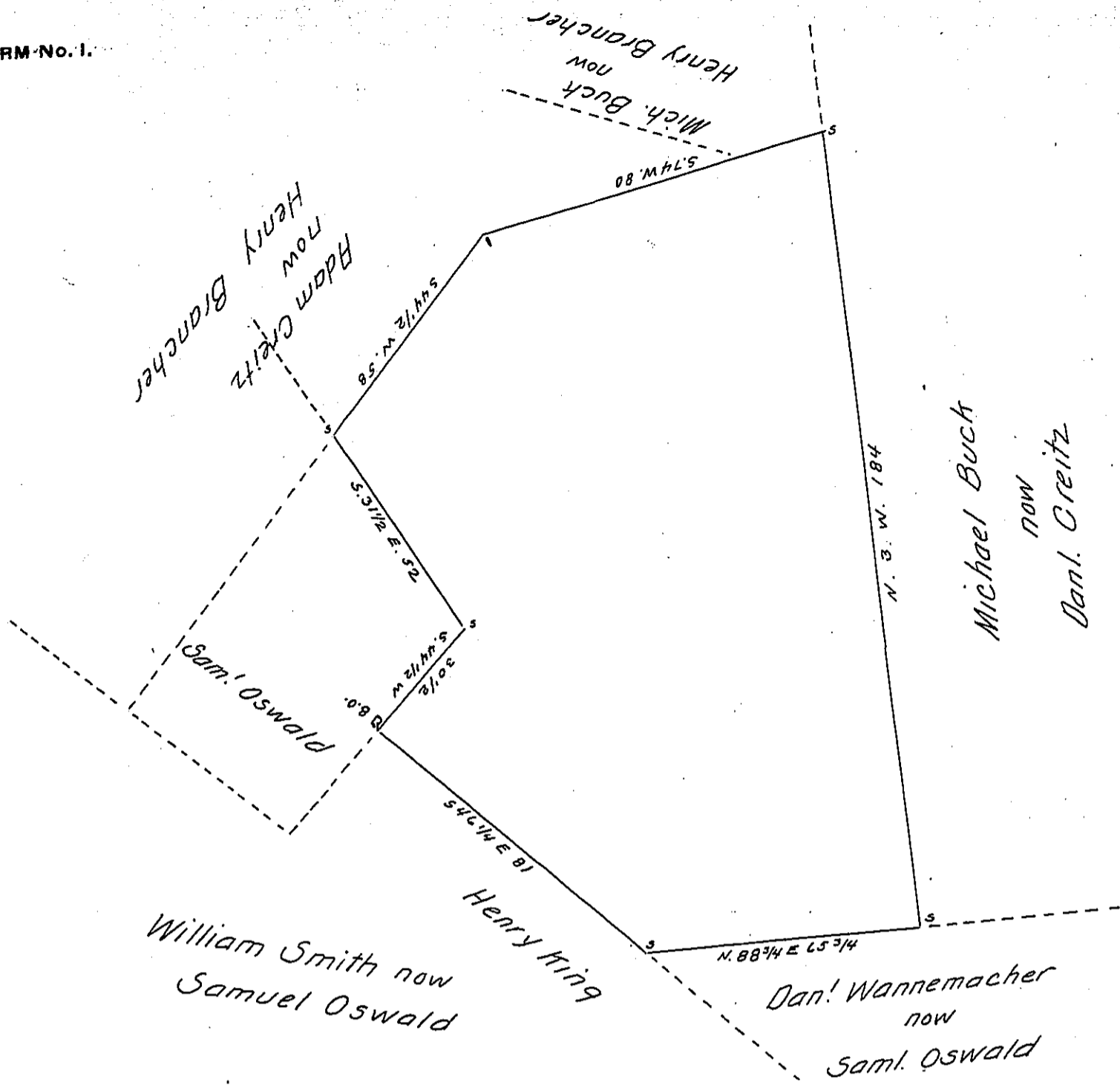


FORM No. 1.



Draft of a tract of land Situate in Lynn township Lehigh County  
 Containing 102<sup>as</sup> 76<sup>ps</sup> and allowance of 6 p.c. for roads &c. Surveyed  
 for Henry Brancher Aug. 16. 1870. Being part of a larger tract of  
 115<sup>as</sup> 87<sup>ps</sup> & allowance. originally surveyed in pursuance of a warrant  
 to Henry Pednick. dated May 3<sup>rd</sup> 1749.

Geo. Blank C.S.

To J. M. Campbell Esq.

S.G.

IN TESTIMONY that the above is a copy of the original remaining on file in  
 the Department of Internal Affairs of Pennsylvania, made  
 conformably to an Act of Assembly approved the 16th day of  
 February, 1833, I have hereunto set my Hand and caused  
 the Seal of said Department to be affixed at Harrisburg,  
 this twenty fifth day of May 1906.

*George R. Brown*  
 Secretary of Internal Affairs.